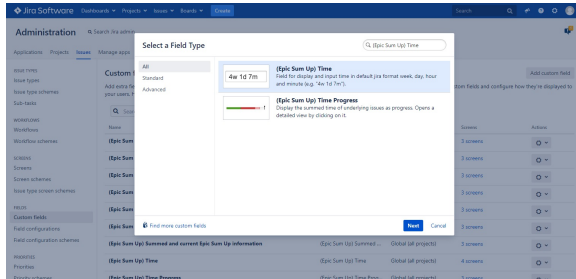


How to add a Time Custom Field

Add a time custom field

1. Install Epic Sum Up
2. Navigate to the "Custom fields" section in the "Issues" settings
3. Add a new "(Epic Sum Up) Time" custom field
4. Assign the new field to the necessary screens



Add the time field to the Summary Panel

1. Navigate to the "Manage apps" section in the Administration
2. Click on "Configuration" in the navigation on the left
3. Choose the "Summary Panel" option within the settings page
4. Click on the "Add" button on the top right
5. Choose the created time field from the dropdown
6. Click on "Save" on the top right

